



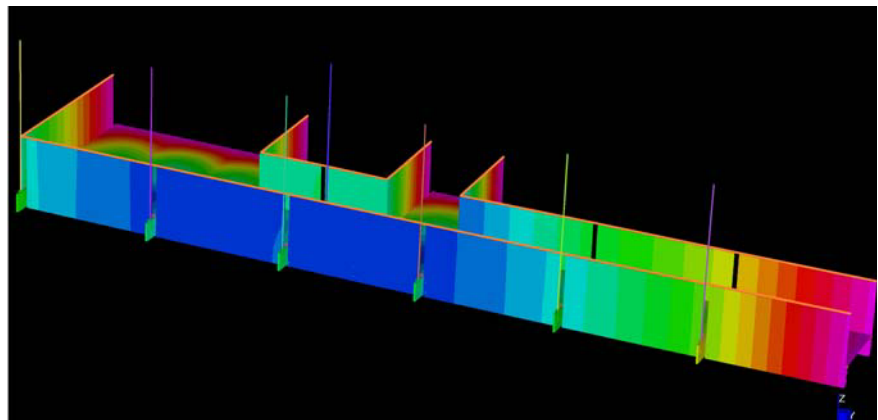
Walking on glass is the City style!

A stylish high level glass walkway is being built to link floor areas adjoining the two-storey atrium of a new office block at 150 Cheapside in the City of London.

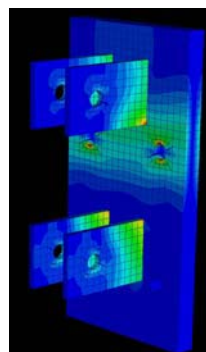
Malishev Wilson Engineers (MWE) have produced the detailed design for the walkway, under a concept conceived by Michael Aukett Architects. Specialist glass manufacture and supplier is F.A. Firman of Harold Wood, London.

The 1.5m wide, 18m long walkway comprises glass floor panels supported on a grillage of glass beams, which in turn will be suspended from the concrete structure of the atrium by means of solid stainless steel rods. Total weight of the glass is approximately 12 tonnes and the walkway's total loading is 32 tonnes, including the live load.

Due to the complex nature of the structure, MWE have used a state-of-the-art finite element analysis programme to evaluate stresses, deformation as well as natural frequency and response of



Above and right: a finite element analysis programme was used to evaluate stresses.



the whole model.

The project is now reaching the final stage of analysis and site installation work is about to start. Completion of the walkway on site is expected by the end of the year.

MWE to feature in the FINANCIAL TIMES

A magazine supplement in the Financial Times newspaper on 'How to Spend It', on adventurous designs in glass for residential properties, is to feature some of Malishev Wilson Engineers' recent projects.

The article, due to be published on Saturday 20th October, will refer to three glass housing structures in France, to be built by F.A.Firman (Harold Wood) with French architect Odile Decq.